

# Maranatha graduates complete 15-day, 320-mile

(Continued from page 1)

immediately backed the group and their goals after Gress approached one of the faculty members with the idea.

"We were thankful that they wanted to do it, not us," Board said jokingly. Board was very much involved with the process, as he and his wife helped to send the group off at the beginning of their trip.

Board said there were initially a few concerns with the trip and the university wanted to make sure the group would be safe before they left. Most of

those concerns were soon put to rest.

"We got all the information (we needed) regarding the trip from the Rock River Initiative website," Boucher said. He added the group received some sage advice on how the river might play out from Schier.

From the moment the group left from the Burnett Ditch Access of the Horicon Marsh on the morning of May 12, they were met with a mixture of experiences that were both trying and mind opening.

"It was amazing to see all

the wildlife, Gress said of the beginning portions of the trip. "One thing I noticed was all the pelicans. We saw flocks of around 40 of them. There were tons of birds. That part of the river between Hustisford and Watertown seems untouched."

For the most part, the group fared well both physically and mentally throughout the trip, but did notice some physical effects in the first few days of the journey.

According to Boucher, the three lost around a combined 19 pounds during the trip's first leg.

Fortunately for the group, their weight didn't fluctuate too much beyond the first few days thanks in large part to the generous offering of food they were receiving from the many people they encountered.

Boucher said the group received meals on most days during the trip and even encountered a lucky streak of six days where lunch or dinner was provided to them.

Brian Kramer, a personal chef, from Rockton, Ill., who Feik, said doesn't operate any type of motor vehicle, rode his bike to a site near Beloit where the trio were staying to provide them with a lunch. Kramer then traveled back to Rockton and provided supper to the group when they stopped in the village.

Just like the hospitable cooking they received, the weather for the most part, played in the group's favor, providing assistance when they needed it.

"The Lord blessed us with great weather and water," Boucher said. The conditions were awesome."

Though the group experienced some inclement weather including thunderstorms during their stay in Watertown, weather was quite calm considering the typical spring onslaught of severe storms. However, on difficult stretch stood out.

"(It was difficult) near Lake Koshkonong due to the shallowness of the lake and the waves," Boucher said.

That (Lake Koshkonong was the only place that made me nervous," Feik said. "We were leery about that one."

For Gress, the passage through Lake Koshkonong and the stretch of the river near Janesville were the most difficult.

"A mile before we got to the lake, the waves got bigger and bigger," Gress said. "That part was a bit scary. One of the hardest parts was coming into Janesville. We had 20 miles to go through Janesville with 20 mile per hour, hard wind against us all day."

Luckily, the group received help at Lake Koshkonong as well as many other possible dangerous situations, such as when they were forced to portage the dams. Gress estimates the group encountered 18 dams on the trip.

"Dams were a concern from the beginning," Boucher said. "They need to be respected."

According to Schier, the most dangerous dam to portage on the river is located between the cities of Sterling and Rock Falls Ill. Like their stops in most cities, the trio were treated hospitably between the adjacent towns.

Schier said Boucher, Gress

# Rock River journey —

and Feik were greeted enthusiastically by the mayors of both cities. The Rock Falls Park District even provided a truck and trailer to help the men portage the river, according to Schier.

Gress said such encounters provided the group with the encouragement they needed to power through the trip.

"When we pulled into cities and we had people cheering for us," he said. "We called those morale boosters."

Gress said the group also received a great deal of encouragement on their Facebook page, "Rock River Start to Finish," which has now reached 100 likes.

"One lady tracked us down from our posts," he said. "She saved money for us to help out along the trip and said she was in alumnus."

Undoubtedly, the unwavering support and unique interactions the three experienced, both between each other and in dealing with the people they met, was the highlight of the trip.

"Oh, man it was a very satisfying experience," Feik said. "Just to be able to have done it with Jake and John, it's something I'll remember for the rest of my life. It was such a rewarding experience. We were blessed so many times throughout the trip."

"All the people we met ... there was a story teller in every community," Boucher said. "We learned about life and the communities. The people were phenomenal. We didn't meet one mean person."

One individual who provid-

ed great support and guidance from the inception of the trip to its end, was Schier, who Feik said helped to make the end result possible.

"(Schier) was extremely helpful," said Feik, who said the steak dinner Schier provided the group was his favorite meal of the trip. "He provided us with gobs of information. He helped us to find campgrounds and people to stay with. Helped us to portage some of the bigger dams. The info he provided us with made trip so successful."

Schier's admiration for the kayakers was equally as strong. He not only commended their decision to make the trip with a great cause in mind, but also the influence the trip had on the Rock River Initiative.

"To have three young men of such great quality doing it, to me was a real gift," Schier said. "It was a learning experience to our (Rock River Initiative) counsel. It told us what shape the campsites are in, the speed of the river and what the portages were like ... It was a very good inaugural run for the trail, so we could understand our systems better. The knowledge we gained from this will help us out and help future paddlers. Also, thankful of all that helped them out along the way."

As of Wednesday, "Kayaking for the Sabercats," had officially earned over \$1,000. He added that several other pledges have been made and it might take two to three weeks to come up with an official tally.

To make a donation, go to <http://www.mbbc.edu/kayak/>.





SAMANTHA CHRISTIAN/Daily Times

With the Division Street bridge in the background, friends Jake Boucher, Jon Gress and Garrett Feik kayak toward Riverside Park on May 16 during their journey along the Rock River. More photos at [www.wdtimes.com](http://www.wdtimes.com).

## Maranatha grads complete 15-day Rock River journey

BY JAKE MEISTER  
[jakem@wdtimes.com](mailto:jakem@wdtimes.com)

Plenty of college students start their summers off with some sort of planned adventure, but few can top the excursion three men undertook to began their time away from campus.

Maranatha Baptist University students Jake Boucher and Jon Gress, along with Boucher's high school friend Garrett Feik, a Western Illinois student, recently kayaked the entire length of the Rock River over a 15 day period. That's right, the trio managed to travel the meandering river, which stretches between the Horicon Marsh and the river's confluence with the Mighty Mississippi at Rock Island, Ill. in just a shade over two weeks.

According to Rock River Trail Initiative founder and coordinator, Frank Schier, it was the first known completed trip of its kind since the late fall of 1994, when Nels Akerlund kayaked the river's distance.

For a group of men who readily embrace most forms of outdoor recreation, the trip served as more than an opportunity to experience an adrenaline rush, it also gave the group a chance

to give back to Maranatha Baptist University through a plan they helped to contrive.

On the night the university announced it would be making the Sabercat its new mascot, Boucher said he and Gress discussed how they could use their planned trip as a way to fund and support the university's new identity.

The group decided to use the trip as a fundraiser which was soon, dubbed "Kayaking for the Sabercats." A goal of \$5,000 was soon established to help purchase athletic jerseys, a mascot uniform and a new basketball court.

"We knew the mascot costumes are pretty expensive," said Gress, a Biblical studies major who is scheduled to graduate in May of 2015. "We wanted to help raise money for everything."

Gress, who attends a variety of the university's athletic events, said he's happy to contribute to many of the university's athletic programs, including the soccer team, which he played on for two seasons.

Steve Board, who is both the director of development and a business professor at Maranatha, said the school

(Continued on back, col. 1)



SAMANTHA CHRISTIAN/Daily Times

Kayakers, from left, Jon Gress, Garrett Feik and Jake Boucher made a stop at Riverside Park in Watertown on May 16 to greet supporters and eat lunch during their 320-mile journey along the Rock River from the Horicon Marsh to its end at the Mississippi River. More photos at the Facebook page *Rock River Start to Finish*.

EST. J  
f  
EST.  
(Days)  
Brass & More  
Sat 9-12:30  
RECYCLING  
Watertown

Watertown Daily Times May 31, 2014

## Concealed-carry mishap leads to woman's injury at county dog park

By Lydia Statz, Union staff writer | Posted: Tuesday, June 3, 2014 9:24 am

JEFFERSON — A recent day at the Jefferson County Dog Park turned into more than one dog owner bargained for when her firearm accidentally discharged, wounding her.

According to the Jefferson County Sheriff's Office, a female at the Jefferson County Dog Park suffered a self-inflicted gunshot wound when she unintentionally fired her handgun on May 11.

Jefferson County Corporation Counsel Phil Ristow said during Monday's meeting of the county Parks Committee that the woman has a Wisconsin concealed carry permit allowing her to legally carry the gun on county park property. She fired the weapon while attempting to tuck it back into her belt, he noted.

The bullet injured her buttock, and she was treated for the wound at an area hospital. No other people or dogs were injured.

The Jefferson County Sheriff's Office was notified of the incident, and has been investigating what charges might be appropriate.

The county is unable to restrict patrons from legally carrying concealed weapons in county parks, but discharging weapons in county parks is illegal.

Other updates about the Jefferson County Parks system brought news of possible expansions and projects that add new accessibility to popular facilities.

The county is moving forward in its attempt to create a new recreational area on the former Watertown Outboarders property south of Watertown.

The project has been talked about for many months, but has hit many snags along the way. Now it might be closer to a final deal, parks officials learned.

The Quirk Foundation, a Watertown charitable organization, originally approved a \$25,000 grant to help the Wisconsin Department of Natural Resources purchase the 6.12-acre property, which would then become a recreational area operated by Jefferson County.

However, a disagreement between the DNR and Jefferson County Parks Department over how the land should be used put that deal in jeopardy. Further negotiations approved the land for use as a fishing and boating destination, but the structures on the property will need to be removed.

The county originally had hoped to operate the original Outboarders "clubhouse" as a revenue-producing operation for the county.

County Parks Director Joe Nehmer said he is hopeful that a final purchase deal will be reached soon, and it will be brought before the Jefferson County Board of Supervisors for approval.

Additional, construction on the new playground at Korth Park in Lake Mills is nearing completion, it was reported.

The playground will be fully handicapped-accessible, including ramps allowing children in wheelchairs to access multiple levels of the play equipment.

Construction of the \$75,000 structure was paid for in part by a \$25,000 fundraising drive and through local business donations.

Jefferson County Parks Committee members were informed that parks officials had hoped that the equipment would be open for the public to use by this point, but several setbacks with manufacturing errors have led to delays. Later this summer, a formal dedication will open the playground.





Rose Lake in Dorothy Carnes Park.  
(Photo by Janice Redford)

## Wildlife thrives at Dorothy Carnes Park

By Janice Redford  
*Special to the Lakes Edition*

Dorothy Carnes Park is a 514-acre conservation park located 1.2 miles west of Fort Atkinson on Radioff Lane. The park is habitat for many kinds of wildlife, including muskrats, raccoons, fox, cottontail rabbits, squirrels, chipmunks, wood mice, plus Cope's gray tree frogs.

A modern shelter house is available for rentals and picnics next to the parking lot on Radioff Lane. The hiking trails run along steep hills that are next to Rose Lake, a 175-acre seepage pond surrounded by wetlands and oak trees. The maximum depth of the lake is 12 feet and it is surrounded by a 70-acre wetland that is home to a great diversity of wildlife.

Visitors can see hundreds of white pelicans on Rose Lake in early spring and summer. The birds have a 9-foot wingspan with enormous orange bills and large throat pouches. Smaller birds in the park include: purple martins, bluebirds, red-tailed hawks, woodpeckers, yellow-headed blackbirds, mallard ducks, Canada geese, sandhill cranes, and other common birds.

The east segment of the park is being developed. It includes a turtle effigy mound and log cabin that was originally built by the Mason family more than 150 years ago. The restored log cabin will be completed soon.

A busy group of volunteers called Rose Lake Friends continues to improve the park. Dorothy Carnes Park is one of the largest parks in Jefferson County and more information can be obtained by visiting: [welcomejeffersoncounty.wi.gov](http://welcomejeffersoncounty.wi.gov).

**Jane Stanger**

---

**From:** Clare Carlson <friendsofgha@gmail.com>  
**Sent:** Thursday, June 26, 2014 11:08 AM  
**To:** Clare Carlson  
**Subject:** More GHA events this summer

Sorry to bombard you all with another email, but there's more events to announce in the Glacial Heritage Area; definitely something for everyone.

**JUNE****Friends of GHA Paddle down the Bark River, Saturday June 28 (followed by lunch at Cafe Carpe), 9:30 Put In**

The paddle is from Burnt Village to Fort Atkinson. We've rented all the boats from 2Rivers Bicycle & Outdoor, but if you are interested in bringing your own paddle craft, feel free to join us. Please email me and I will send you details.

**Tour da Goose Bike Ride, Saturday June 28 (<http://www.tourdagoose.com>)**

Register online or day of ride, beginning at 7 a.m. The ride is a fundraiser for the Watertown Area Cares Clinic, which provides healthcare for the uninsured in Jefferson and Dodge Counties. Enjoy a 30 mile, 60 mile, or 10 mile family-friendly route through the Jefferson County countryside. The 60 mile ride starts between 8 and 9 a.m., 30 mile between 9 and 10, and the 10 mile after 10 a.m. Lunch will be served from 11:30 to 1:30 and the band will play from noon until 2 p.m. See the [Tour da Goose](http://www.tourdagoose.com) web site for further details.

**Family Fun Float, Saturday, June 28**

Paddle down the Rock River this Saturday at the Family Fun Float. The 5.5 paddle starts at the Highway B Boat launch just West of Johnson Creek and ends at the Jefferson Rotary Park just North of the Dam. A return shuttle between the HWY B launch area and Rotary Park will be available till 1:00 p.m. Registration is from 9 a.m. - 10 a.m. Other attractions at this event: Sno-Hawks Snowmobile Club is sponsoring bouncy house and serving food and beverages, "Tribute to the Watertown Outboarders" boat parade at 5 p.m., and refreshments/beverages are available from 11 a.m. - 10 p.m. Cost: \$10 per person. Canoe rental is available (please call ahead). Chamber at 920-674-4511 or Steve Lewis at 920-674-9000.

**Rose Lake Images - Gathering of Artists' Event at Dorothy Carnes County Park (East & West Units), Fort Atkinson, Sunday, June 29**

This event, sponsored by Rose Lake Friends of Dorothy Carnes Jefferson County Park, will be a great time for friends and family to visit the park to observe artists working at the park, sketching, painting, photographing...working in the medium of their choice, to develop art work relating to nature and particularly the Rose Lake area. Artists and the public are invited to spend as much time as they can at the park that day, from dawn 'til dusk.

**JULY****Lake Fair at Ripley Park Saturday, July 5, 10 a.m. - 12 p.m.**

The Lake Ripley Management District (LRMD) is hosting this event, focusing on lake water quality issues. Open and free to the public, booths will be set up highlighting aquatic invasive species, water quality monitoring, macroinvertebrates, and more. The Friends of Glacial Heritage Area will also have a booth at this event with GHA watertrails maps and other items available. The event is also an opportunity to highlight the



District's work with area homeowners who pledged to accomplish one or more water-improvement actions this spring. Such actions included rain garden planting, downspout diversion, and native tree plantings.

**Rock Lake Water Tour, Sunday, July 20, 8:45 a.m. - 11 a.m.**

The Rock River Coalition is pleased to highlight area lakes in July as part of a year-long celebration of their 20th Anniversary by hosting the Rock Lake Water Tour in Lake Mills, Jefferson County. Rock Lake in Lake Mills is one of over 150 lakes in the Rock River Basin known for its excellent water quality and natural beauty. Check-in begins at 8:45 a.m. and the tour will take about two to three hours. At the Tour, participants will be able to hop onto a pontoon boat or bring their own paddle craft to visit a variety of interesting educational sites on the water, including carnivorous plants, observe cool fish, and view unwanted plants and animals. Stations will be instructed by experts from DNR, an aquatic biologist, and other specialists. Co-sponsors of the family-friendly event include Jefferson County Land and Water Conservation Department, Rock Lake Improvement Association, and Friends of the Glacial Heritage Area. The Tour begins at Sandy Beach Park at 345 Sandy Beach Road, Lake Mills. The fee is \$5 per person, and children under the age of 12 are free. All participants—those with personal paddle craft and those wishing to ride on event pontoons—must register prior to the event. Space is limited, therefore registration is required by Wednesday, July 16 to Patricia Cicero ([920-674-7121](tel:920-674-7121) or [patricia@rockrivercoalition.org](mailto:patricia@rockrivercoalition.org)).

FYI

We had a great birding day at Horicon Marsh last weekend, saw about 50 species, plus turtles, snake, all kinds of insects, and plants we couldn't identify (until we went home and looked them up). Anyone interested in the official bird count for the day, give me an email.

My daughter on the new boardwalk trail (note the Horicon Marsh Center in background).



Clare Carlson  
Board Representative  
Friends of Glacial Heritage Area  
[friendsofgha@gmail.com](mailto:friendsofgha@gmail.com)  
[glacialheritagearea.org](http://glacialheritagearea.org)  
Facebook: Glacial Heritage Area



**2014 GHA Paddling Schedule!**

All paddles (mostly 2 to 3 hours) begin at 9AM on Saturdays at the Put-In shown. Put In Take Out numbers are from Glacial Heritage Area Watertrails Map. Email [jwmckenzie@charter.net](mailto:jwmckenzie@charter.net) (preferable) or call 920-563-8894 if need map or plan to come on any of these paddles. If cancellation, will email before 7:30AM on day of paddle.

May 17 Red Cedar Lake - Put in 13

May 31 (Rock) Fort Atkinson to Vinnie HaHa - 65 to 18

June 14 (Bark) Kanow Park to Pipersville - 50 to 51

June 28 (Rock) Fun Family Float – details later!

July 12 (Crawfish) Aztalan to Tensfeldt Park –38 to 62

July 26 ((Beaver Dam/Crawfish) Ranch Road to Hubbleton – 29 to 34

Aug 16 (Bark) Burnt Village to Fort Atkinson – 48 to 65

Aug 30 (Crawfish) Olson Road to Milford –35 to 37

Sept 13 (Rock) Riverfront Park (Jefferson) to Bark River Fry Hatchery - 39 to 64

Sept 27 (Crawfish) Hwy I to Hwy G – 31 to 33

Oct 11 (Bark) Princess Point to Burnt Village – 47 to 48

## Information regarding Dementia and Autism Friendly Parks

### Playground Equipment and Autism- The Sensory Rich Playground for Children with Autism Spectrum Disorder

Young children learn by using all of their senses, so your playground should offer as many experiences as possible. For kids with Autism Spectrum Disorder, this need for balance can be extreme. The more sensory experiences, the more is learned and gained during development. The playground should include the following sensory areas:

- Visual and tactile



#### **Color and Varying**

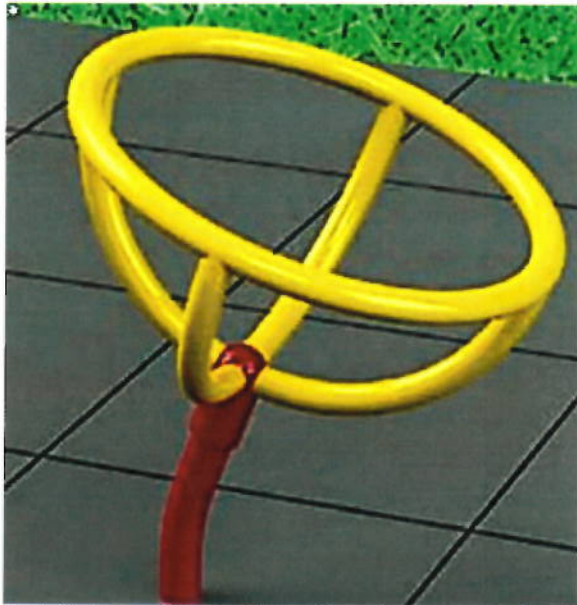
**Elevations:** Adults tend to look at the functional aspect of playgrounds that includes the natural coloration and a traditional theme. Often times, the natural looking playground is aesthetic for the adult rather than the child. It's rare that the typical child-oriented environment consists of typical natural coloration, i.e. beige, green, brown. More likely, a playground with a variety of shapes, colors, and forms will offer the most stimulation and improve spatial perception.





And appropriate swings and other cool stuff like below. ☺





**Axis Spinner** Xccent Play. By using core muscles, kids can propel themselves or can be pushed w/supervision

### **Dementia friendly parks**

There are a number of changes that can be considered that can have a major impact on improving accessibility for people with dementia:

#### **Signage:**

- Signs should be clear, in bold face with good contrast between text and background.
- There should be a contrast between the sign and the surface it is mounted on.
- Signs should be fixed to the doors they refer to – not on adjacent surfaces.



- Signs should be at eye level and well-lit.
- The use of highly stylized or abstract images or icons as representations on signage should be avoided.
- Think about placing signs at key decision points for someone who is trying to navigate your premises for the first time.
- Signs for toilets and Exits are particularly important.
- Ensure that glass doors are clearly marked.

### **Lighting:**

- Entrances should be well-lit and makes as much use of natural light as possible
- Pools of bright light and deep shadows should be avoided. **Seating**

### **Seating**

- In larger premises – a seating area especially in areas where people are waiting can be a big help
- People with dementia prefer seating that looks like seating – so for example a wooden bench rather than an abstract metal Z-shaped bench.

### **Navigation**

- Research shows that people with dementia use “landmarks” to navigate their way around, both inside and outside. The more attractive and interesting the landmark (which could be a painting, or a plant) the easier it is to use as a landmark.

### **Other items to consider:**

- Set up gardens and outside spaces
- Choose plants that mark seasonal changes and are non-toxic
- Make paths level and hazard free...very important for obvious reasons
- Create a walking circuit with orientation and way finding cues
- Offer gardening experiences
- Adult swings
- Possibly enclosed place
- Raised sand box

**Jane Stanger**

---

**From:** Jane Stanger  
**Sent:** Wednesday, July 02, 2014 9:40 AM  
**To:** Jane Stanger  
**Subject:** FW: atv

**From:** Joe Nehmer  
**Sent:** Tuesday, June 24, 2014 1:27 PM  
**To:** Jane Stanger  
**Subject:** atv

Dear Town Clerk,

We have been receiving an increasing number of inquiries about ATV operation on town roads in Jefferson County. We would greatly appreciate it if you would tell us if your township allows ATV operation on your roads. If so, please let us know which roads you allow them on.


Thank you for your assistance.

Sincerely,

Joe Nehmer, Director  
Jefferson County Parks Department

NOTICE: This e-mail and any attachments may contain confidential information. Use and further disclosure of the information by the recipient must be consistent with applicable laws, regulations and agreements. If you received this e-mail in error, please notify the sender; delete the e-mail; and do not use, disclose or store the information it contains.

---



This email is free from viruses and malware because avast! Antivirus protection is active.



## RESOLUTION NO. 2014-\_\_\_\_\_

**Purchase handicapped accessible fishing platform**Executive Summary

The Jefferson County Parks Department desires to install a handicapped accessible fishing platform on the Rock River at Blackhawk Island. An 80%/20% Sport Fish Restoration grant has been obtained from the Wisconsin Department of Natural Resources for this purpose.

This site on Blackhawk Island is the location of Jefferson County's first flood mitigation project. Fishing at the parcel, located just upstream from Lake Koshkonong, is excellent.

Bill Kohls of Fort Atkinson has been a champion of this project for a long time. Bill has been a spokesperson for the non-profit organization Fishing Has No Boundaries, whose goal is to open up the great outdoors for people with disabilities.

---

WHEREAS, the Jefferson County Board of Supervisors has previously approved the execution of a grant contract with the Wisconsin Department of Natural Resources for the construction of a handicapped accessible fishing platform on Blackhawk Island, including related parking facilities, and

WHEREAS, the Parks Department has solicited written proposals for the purchase of an 8' X 20' accessible fishing wharf including a 6' X 20' gangway, and

WHEREAS, the Parks Department has received two bids, one from Port-A-Pier in the amount of \$35,362, and the other from VW Docks in the amount of \$31,514, and

WHEREAS, the Parks Department recommends purchase of the accessible fishing platform from the low bidder, VW Docks,

NOW, THEREFORE, BE IT RESOLVED that Parks Director Joe Nehmer is authorized to enter into a purchase agreement with VW Docks for the acquisition of a handicapped accessible fishing platform in the amount of \$31,514.

*Fiscal Note: The total project cost is estimated to be approximately \$44,254. Of the \$44,254 cost, \$35,403 will come from grant funding from the Wisconsin Department of Natural Resources. The County's share of \$8,851 shall be provided through in kind labor from Parks Department staff and existing available funds.*

Ayes\_\_\_\_\_ Noes\_\_\_\_\_ Abstain\_\_\_\_\_ Absent\_\_\_\_\_ Vacant\_\_\_\_\_

Requested by  
Parks Committee

07-08-14

Joe Nehmer & Brian Lamers: 07-01-14

## Jane Stanger

---

**From:** Joe Nehmer  
**Sent:** Thursday, July 03, 2014 11:34 AM  
**To:** Jane Stanger  
**Cc:** Mary Nimm; Kevin Wiesmann  
**Subject:** FW: Watertown Outboarders  
**Attachments:** WTO Meeting 6 17 14 2.docx

---

**From:** Matthews, Gregory K - DNR [<mailto:Gregory.Matthews@wisconsin.gov>]  
**Sent:** Friday, June 20, 2014 10:48 AM  
**To:** Joe Nehmer  
**Cc:** Hefty, Brian - DNR; Borsechnik, David A - DNR; Phelan, Pamela K - DNR; Lobner, Eric C - DNR  
**Subject:** Watertown Outboarders

Joe: attached are the minutes of a meeting held this week to discuss the Department's next steps regarding the Watertown Outboarders (WTO) property. As you will read, tasks have been assigned to Department staff aimed towards moving forward with the property.

Pending guidance from our Bureau of Facilities & Lands, I will prepare a draft implementation plan for the property. I will then forward it to you for inclusion of Jefferson County's plans for the property. The two plans – DNR and Jefferson County – will then be combined into one implementation plan. I don't see the plan being more than a two page document.

According to John Pohlman, once our draft is completed, all we need do is post it on the GHA website and ask for public comment. We don't need to host a public meeting. After receiving public comment, we can send it up Department channels for the Lands Division Administrator to sign off on it.

Any questions, please contact me.

Greg

 *Greg Matthews*

Coordinator

Glacial Heritage Area

Southern District Wildlife Management

Wisconsin Department of Natural Resources

(☎) **phone:** (608) 275-3320

(☎) **fax:** (608) 275-3338

(✉) **e-mail:** [Gregory.matthews@wisconsin.gov](mailto:Gregory.matthews@wisconsin.gov)

Find us at: <http://dnr.wisconsin.gov/> and [www.facebook.com?WIDNR](http://www.facebook.com?WIDNR)

WTO Meeting 6/17/14

Brian Hefty, Dave Borsechnik, Greg Matthews, Pam Phelan

Department staff support Joe's plan for the WTO site as defined in his 6/6/14 email to Greg and Pam. In order to continue movement on the proposed plan Department staff is doing/will do the following:

Dave

- Hazardous electrical removal began yesterday, hope to complete today.
- Requesting bids for the removal of the pit toilets and beer garden.
- After the two above tasks are completed, the Department will open the site to the public.
- Will meet with WTO on 6/30/14 to turn over the keys to the clubhouse. Dave reported most of the personal property has already been removed.
- Will post the project boundary with GHA signs and include DNR and Jefferson County logos.
- Will submit development project request for the lagoon and shoreline work and new boat launch and parking area. CO has summer intern who will write up specs for the new pier.

Brian

- Checked manual code and GHA agreement on naming properties. Will work with Jefferson County to name the property after the Quirk Foundation.
- Ask Kate Fitzgerald to schedule staff to write an implementation plan for the property. If a template for a simple implementation plan available, Greg Matthews offered to draft the plan.

Greg

- Provide Joe Nehmer summary of today's meeting.
- Draft implementation plan if template available.
- Provide Joe Nehmer Dept. implementation plan for the property; ask him to provide Jefferson County's. Will combine two for the property implementation plan.

Pam

- Start reclamation. Have all the buildings posted on the WI Surplus site.
- Provide Joe Nehmer a summary of today's meeting (if Greg does not).



Item 17

**Jane Stanger**

---

**From:** Joe Nehmer  
**Sent:** Wednesday, July 02, 2014 10:28 AM  
**To:** Jane Stanger; Kevin Wiesmann; Mary Nimm  
**Subject:** FW: Request for Graduate Student  
**Attachments:** Crawfish River Park Scope of Work Packet.pdf

For the packet.

-----Original Message-----

**From:** Steve Grabow  
**Sent:** Tuesday, June 10, 2014 10:39 AM  
**To:** Debi A. Griffin; 'Eric Schuchardt'  
**Cc:** John Harrington; Joe Nehmer; Kim Buchholz - UW  
**Subject:** Request for Graduate Student

Hi Debi and Eric...thanks for your prompt response to my inquiry about the potential for a graduate student to help develop a Crawfish River Park Master Plan for Jefferson County...I have attached a packet with the initial scope of work and potential work products...my client and I have significant familiarity with both the capstone process (I think we have sponsored 10 or so over the past 20+ years). In addition, former UWEX Landscape Architecture Specialist Sue Thering had arranged graduate level assistance to support a targeted park plan and design charrette process a couple years ago...our preference would be to find a graduate student for this project so your assistance is greatly appreciated...please let me know if you have any questions and you can have prospective students call me directly if they would like insights on this project...my client has identified a budget of \$2,000-\$2,500 for the student work...we think this is a win-win arrangement...thanks again...Steve...

Steve Grabow, Professor  
Community Development Educator  
University of Wisconsin-Extension  
Jefferson County Office  
864 Collins Road, Jefferson, WI 53549  
Phone: (920)674-7295  
Email: [steve.grabow@ces.uwex.edu](mailto:steve.grabow@ces.uwex.edu)  
Website: [www.uwex.edu/ces/cty/jefferson](http://www.uwex.edu/ces/cty/jefferson)

-----Original Message-----

**From:** Debi A. Griffin [<mailto:dagriffin@wisc.edu>]  
**Sent:** Thursday, June 05, 2014 2:17 PM  
**To:** 'Eric Schuchardt'; Steve Grabow  
**Cc:** John Harrington  
**Subject:** RE: 2014-2015 UW Madison Dept of Land Arch Capstone Application Announcement

Dear Steve,

Thank you for your interest in our capstone program and students.

I am the academic services coordinator and work with students and faculty, so I am a good person to contact when you are looking for student/faculty contacts or getting requests out to the population. Our department administrator is Ken Scott.

Please send your document to me and I will be sure it gets to graduate advisors and students. As Eric mentioned, if you do not find a graduate student please consider submitting a capstone application. Our graduate program is researched based and attracts students with varied undergraduate degrees that may or may not be design degrees; while our undergraduate program is an accredited professional design degree.

If you have any other questions please feel free to contact me.

Kind regards,

Debi Griffin  
Academic Services  
Department of Landscape Architecture, University of Wisconsin-Madison Room 1, Agriculture Hall, 1450 Linden Drive  
Madison, WI 53706  
(608) 263 7301

Debi

-----Original Message-----

From: Eric Schuchardt [<mailto:ejschuchardt@wisc.edu>]

Sent: Wednesday, June 04, 2014 7:08 PM

To: Steve Grabow

Cc: Deborah Griffin; John Harrington

Subject: RE: 2014-2015 UW Madison Dept of Land Arch Capstone Application Announcement

Hi Steve-

This sounds great and thank you for sharing the Capstone email with your clients.

I copied Debi Griffin, our Department Administrator and John Harrington, our Department Chair. They will know if there are any graduate students that might be interested in your project listed below. If there aren't any graduates students available, feel free to submit your project as a potential Capstone project.

Cheers,

Eric

--

Eric J. Schuchardt

Senior Capstone Coordinator & Associate Lecturer University of Wisconsin - Madison Department of Landscape Architecture [e] [ejschuchardt@wisc.edu](mailto:ejschuchardt@wisc.edu) [cv]

On 06/03/14, Steve Grabow wrote:

> Eric...thanks...I will share with my usual clients to see if there are projects...also, our County Parks Director is interested in hiring a graduate student to assist in the development of a Master Plan for a recently acquired parcel of land (Crawfish River Park) on the west edge of Jefferson. It is a 17 acre parcel. We also have our eye on a 5 acre parcel across the river which may enable a broader program. Since we no

longer have a UW Extension Specialist in Landscape Architecture, I was wondering who my contact might be to help find a student. I will have a "scope of work" document available next week to describe the desired work. It will include a significant stipend. Please let me know...thanks Eric...Steve...

>

>

> Steve Grabow, Professor

> Community Development Educator

> University of Wisconsin-Extension

> Jefferson County Office

> 864 Collins Road, Jefferson, WI 53549

> Phone: (920)674-7295("#">

> Email: [steve.grabow@ces.uwex.edu](mailto:steve.grabow@ces.uwex.edu)

>

>

>

>

>



**Scope of Work and Request for Landscape Architectural/Planning Assistance**  
**Crawfish River Park Master Plan**  
**June 10, 2014**

Location of proposed project: Jefferson, Wisconsin

Date of request: May 30, 2014

Name of organization/community making request: Jefferson County Parks Department;  
University of Wisconsin-Extension, Jefferson County Office; Friends of Crawfish River Park  
Organization/Community Website (If Available): [www.uwex.edu/ces/cty/jefferson](http://www.uwex.edu/ces/cty/jefferson)

Name of primary contact person: Steve Grabow, Professor and Community Development Educator

Address: UW Extension, 864 Collins Road, Jefferson, WI, 53549

Phone: 920-674-7295 Fax: 920-674-7200 e-mail: [steve.grabow@ces.uwex.edu](mailto:steve.grabow@ces.uwex.edu)

Name of primary contact person: Joe Nehmer, Jefferson County Parks Director

Address: Parks Department, 311 S. Center Avenue, Room 204, Jefferson, WI, 53549

Phone: 920-674-7295 Fax: 920-674-7585 e-mail: [joen@jeffersoncountyiwi.gov](mailto:joen@jeffersoncountyiwi.gov)

Policy committee/citizen group: Jefferson County Parks Committee; Friends of Jefferson County Parks; other local advisors.

**Scope of Project**

**Situation:**

The Jefferson County Parks Department has recently acquired a 17 acre parcel of land along the Crawfish River at the intersection of Highway 18 and Highway 26 on the western edge of Jefferson. It has worked in partnership with the Wisconsin Department of Transportation, Wisconsin Department of Natural Resources and a generous group of citizens (Friends of Crawfish River Park). This Friends group raised \$56,000 to purchase the property. The site is at a major trailhead of an off-road segment of the Glacial River Bike Trail which traverses all of Jefferson County along the Rock River corridor. This site has a series of ponds and informal trails. The southern portion of the site is undisturbed with an extraordinary oak savanna area along the river. It is already a popular destination for walkers, bikers, runners, fisherman and outdoor enthusiasts. A major limitation of the site is that automobile parking is not available and cannot likely be included within the parcel given its location along the bike path, expressway and expressway interchange.

However, a five acre parcel of land is currently for sale directly across the river from the site along Highway 18. This provides an opportunity to consider expanded programming.

## Scope of Work

This project consists of the development of a Crawfish River Park Master Plan. A preliminary site assessment and initial site program concepts have been developed. Expected deliverables from the master plan process will include site inventory and analysis (on site maps), program refinement, preparation of alternative design concepts (2-3 drawings), detailed drawing of a recommended site master plan, project implementation/sequencing recommendations, and a master plan document. The client is not looking for extensive narrative in this report, but will need some context and rationale plan recommendations. Small workshops for public input may be part of the process, but these would be facilitated by the client. An in-house design charrette with Parks staff and key advisors may also be a part of the process, but this would be organized and facilitated by the client. Client representatives will be available to guide plan development.

## Preliminary Program Ideas to Incorporate into Master Plan

(17 Acre Site)

### Site Restoration:

- Vegetation and plantings
- Water system, ponds, and structures
- Wetland restoration

### DNR Required Recreation Uses:

- Hunting and Trapping (waterfowl hunting by gun on south end)
- Fishing (improved areas for shoreland fishing; possible addition of piers, wharfs, docks including handicapped accessible fishing)
- Cross-country skiing and hiking (significant opportunity for enhancing existing informal trail system)

### Interface with Glacial River Bike Trail:

- Enhanced trail head gathering area on north end visible from Highway 18 including bike maps and park information kiosk, signature picnic shelter (smaller scale of classic Jefferson County pavilion with heavy timber framing and field stone-see Carnes Park Pavilion), gateway to the Glacial River Trail and Glacial Heritage Area signage, significant landscape improvements and plantings/gardens.

### Paddling:

- Two sites for paddling (kayak and canoe emphasis) put-in/take-outs (PITO)
- Northern PITO near Highway 18
- Southern PITO near designated camping areas and outdoor education areas

### Camping:

- Two or three camping areas along the river in southern park segment proximate to oak savanna area.
- This will be programmed as rustic camping.

#### **Outdoor Education:**

- Outdoor education will occur throughout the site, however gathering areas for school/educational groups will include: 1) the north end picnic shelter, and 2) an outdoor education area in the southern park segment with proximity to the river and oak savanna; outdoor education gathering area options should be explored including a river overlook terrace such as at Carnes Park, small structural amphitheater seating (rustic bleacher/other) or other gathering space feature.
- It is assumed that this will be a popular birding and nature watching park.

#### **(5 Acre Site)**

#### **Parking and Access Drive:**

- A nicely designed 20 space parking lot with landscape and planting features
- An access drive to the parking lot

#### **Restrooms, Picnic Shelter and Picnic Area:**

- A modest but functional restroom and picnic shelter with potable water
- A designated picnic area
- Open play lawn area

#### **Paddling:**

- PITO for paddlers arriving/departing by automobile or needing restroom facilities

#### **Pedestrian/Bicycle Bridge:**

- Linkage to 17 acre and 5 acre sites

#### **Fishing and Shore Access:**

- Designated shore fishing areas
- Fishing platforms on pedestrian/bicycle bridge

#### **Sources of Funding**

- A stipend will be provided (A budget of \$2,000-\$2,500 has been established for this project).

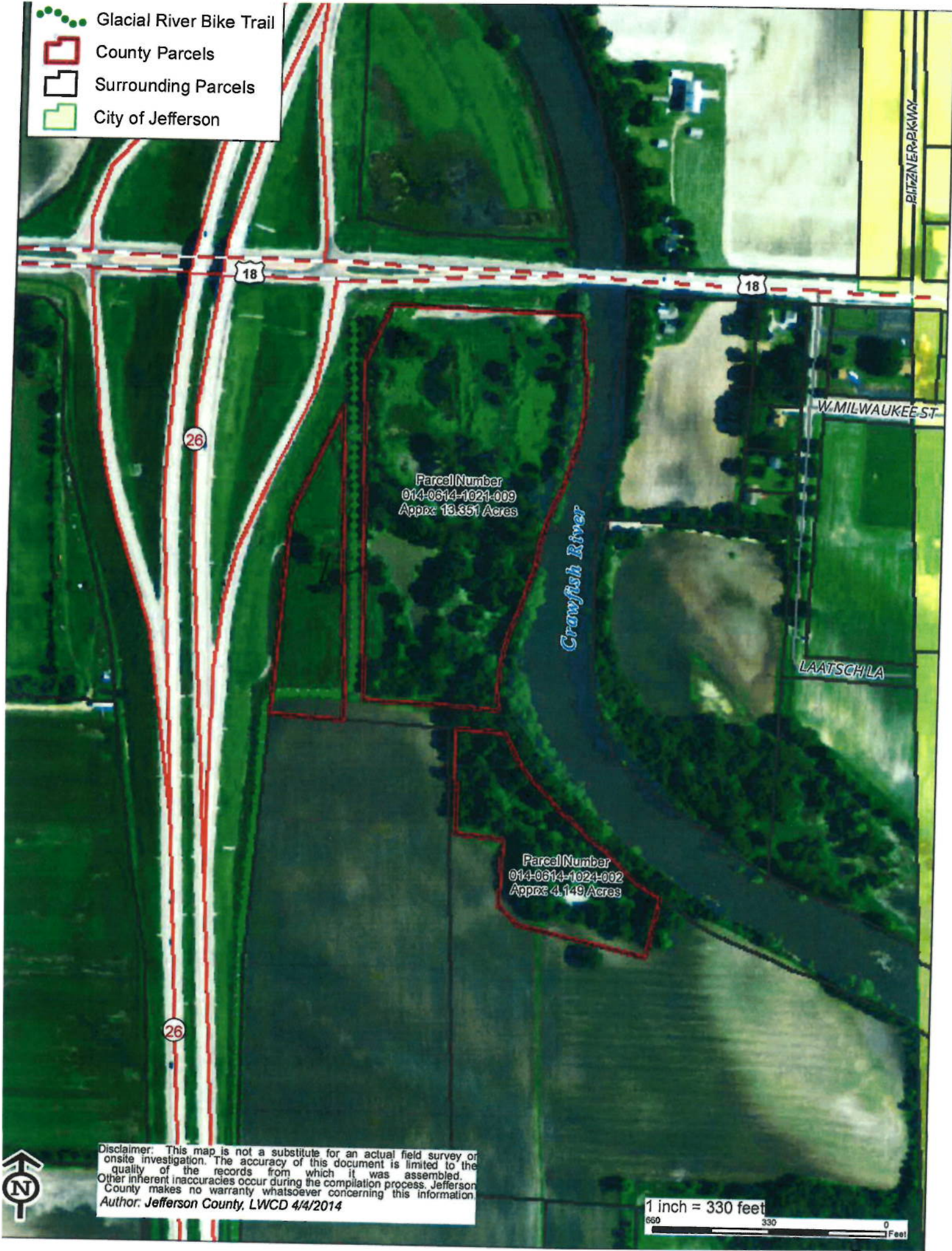
#### **Supportive Materials and Graphic information**

- A packet of maps, photos and other resources are provided in the "Supportive Materials Section."

Prepared By: Steve Grabow, Professor and Community Development Educator, UW Extension, Jefferson County Office in conjunction with Joe Nehmer, Jefferson County Parks Director, Final 6/10/14



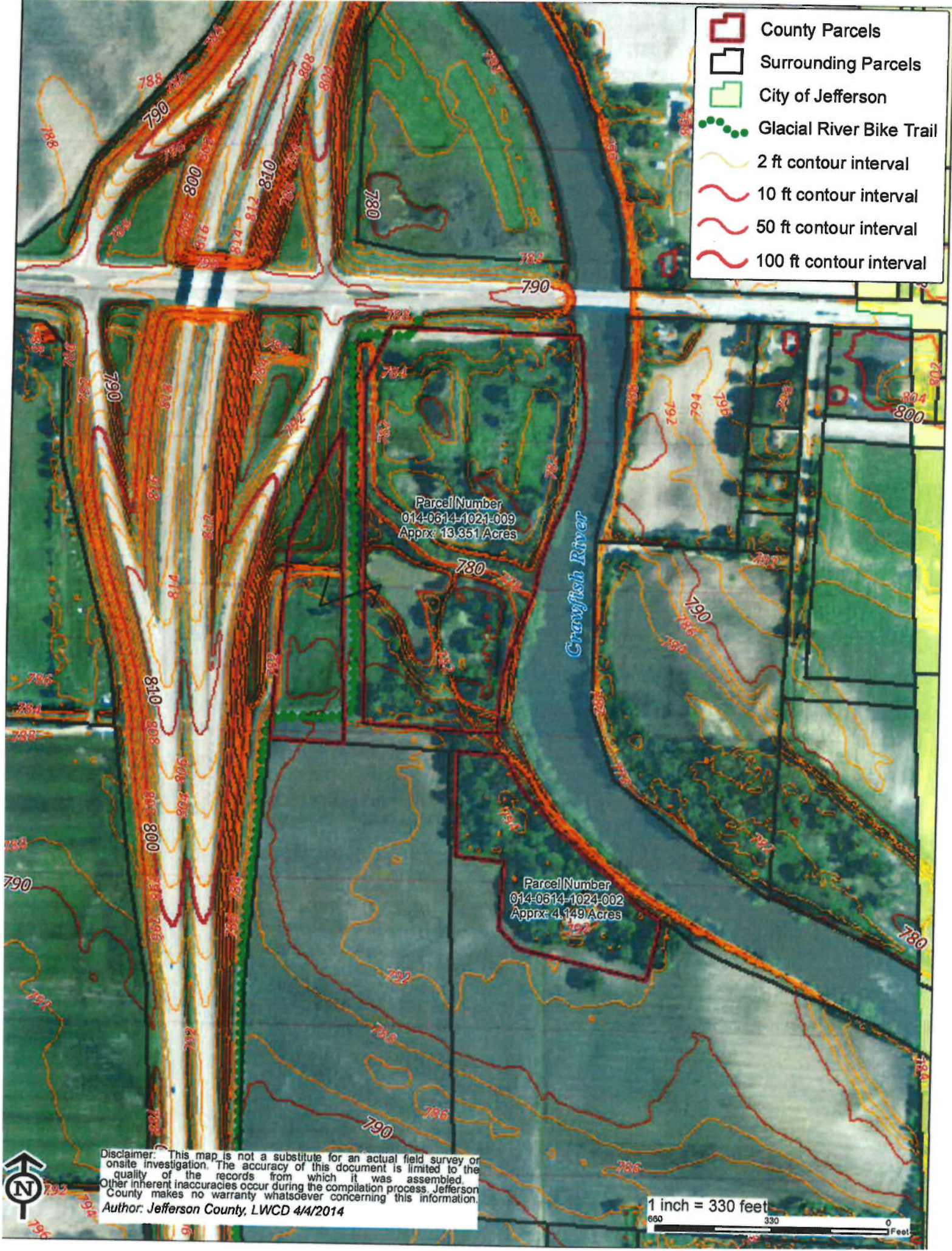
- Glacial River Bike Trail
- County Parcels
- Surrounding Parcels
- City of Jefferson



Disclaimer: This map is not a substitute for an actual field survey or onsite investigation. The accuracy of this document is limited to the quality of the records from which it was assembled. Other inherent inaccuracies occur during the compilation process. Jefferson County makes no warranty whatsoever concerning this information.  
 Author: Jefferson County, LWCD 4/4/2014

1 inch = 330 feet  
 660 330 0 Feet





- County Parcels
- Surrounding Parcels
- City of Jefferson
- Glacial River Bike Trail
- 2 ft contour interval
- 10 ft contour interval
- 50 ft contour interval
- 100 ft contour interval

Parcel Number  
014-0614-1021-009  
Approx. 13.351 Acres

Parcel Number  
014-0614-1024-002  
Approx. 4.149 Acres

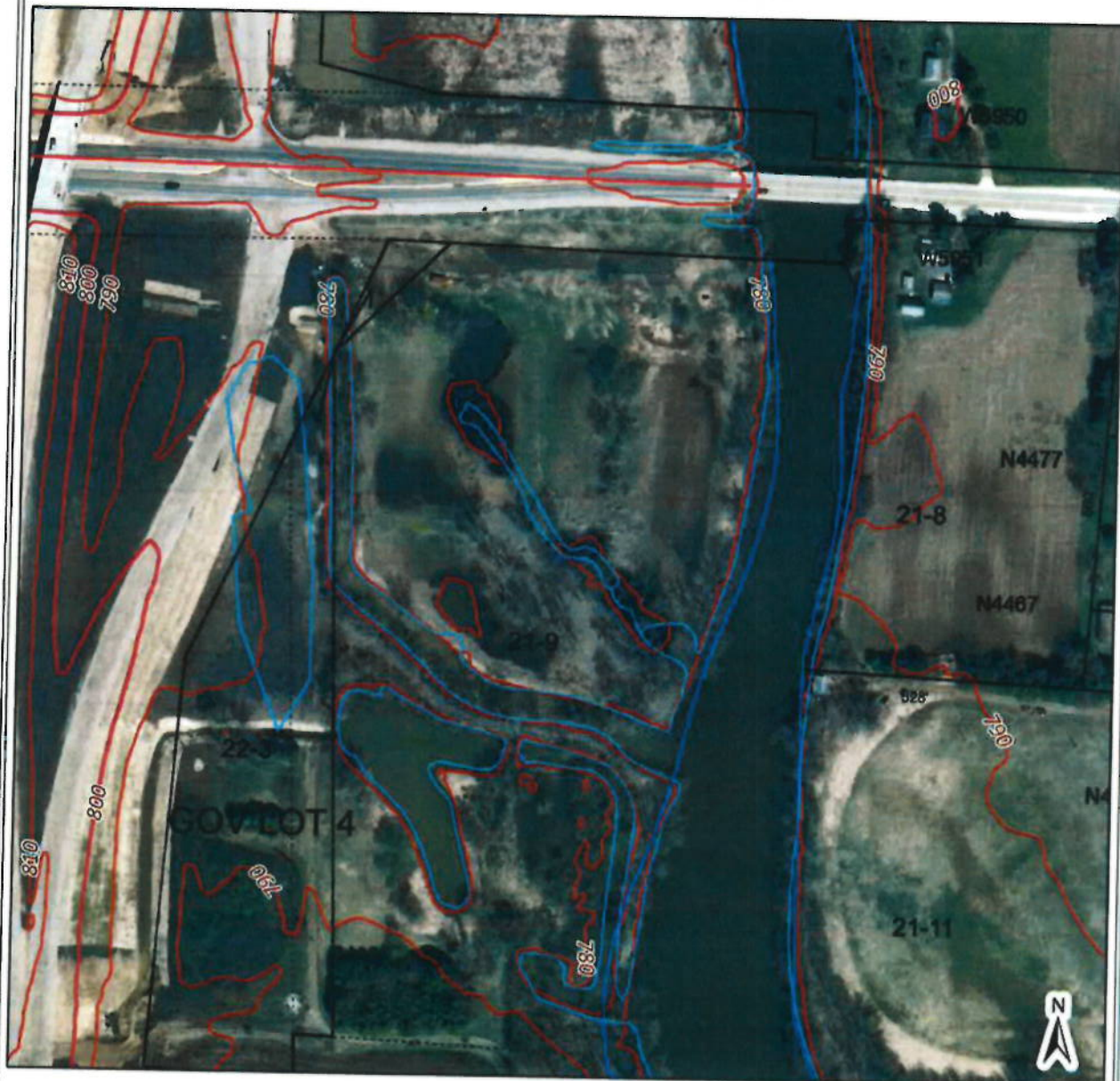


Disclaimer: This map is not a substitute for an actual field survey or onsite investigation. The accuracy of this document is limited to the quality of the records from which it was assembled. Other inherent inaccuracies occur during the compilation process. Jefferson County makes no warranty whatsoever concerning this information.  
Author: Jefferson County, LWCD 4/4/2014

1 inch = 330 feet  
660 330 0 Feet



# Crawfish River Park - North



- |                           |                     |                           |              |
|---------------------------|---------------------|---------------------------|--------------|
| — Municipal Boundaries    | — Section Lines     | — 10 ft contour interval  | Blue: Band_3 |
| — Property Boundary       | — Surface Water     | — 50 ft contour interval  |              |
| --- Old Lot/Meander Lines | — Map Hooks         | — 100 ft contour interval |              |
| — Rail Right of Ways      | Tax Parcels         | Red: Band_1               |              |
| — Road Right of Ways      | Streams and Ditches | Green: Band_2             |              |

 Jefferson County Geographic Information System

DISCLAIMER: This map is not a substitute for an actual field survey or on-site investigation. The accuracy of this map is limited to the quality of the records from which it was assembled. Other inherent inaccuracies occur during the compilation process. Jefferson County makes no warranty whatsoever concerning this information.

100 95 0 100 Feet  
1 inch = 195 feet

Printed on: May 30, 2014

Author:



# Crawfish River Park - South



- |                           |                       |                           |              |
|---------------------------|-----------------------|---------------------------|--------------|
| — Municipal Boundaries    | — Section Lines       | — 10 ft contour interval  | Blue: Band_3 |
| — Property Boundary       | — Surface Water       | — 50 ft contour interval  |              |
| --- Old Lot/Meander Lines | — Map Hooks           | — 100 ft contour interval |              |
| — Rail Right of Ways      | — Tax Parcels         | Red: Band_1               |              |
| — Road Right of Ways      | — Streams and Ditches | Green: Band_2             |              |

Jefferson County Geographic Information System

DISCLAIMER: This map is not a substitute for an actual field survey or onsite investigation. The accuracy of this map is limited to the quality of the records from which it was assembled. Other inherent inaccuracies occur during the compilation process. Jefferson County makes no warranty whatsoever concerning this information.

190 95 0 190 Feet  
1 inch = 195 feet

Printed on: May 30, 2014

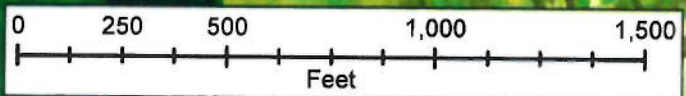
Author:



-  County Parcels
-  Possible 5 Acre Parcel
-  Surrounding Parcels
-  City of Jefferson
-  Glacial River Bike Trail
-  Public Schools



Disclaimer: This map is not a substitute for an actual field survey or onsite investigation. The accuracy of this document is limited to the quality of the records from which it was assembled. Other inherent inaccuracies occur during the compilation process. Jefferson County makes no warranty whatsoever concerning this information. Author: Jefferson County, LWCD 6/10/2014







Western pond



Western pond culvert





Southend, Looking Southwest



River Bank





House directly across the river



Bike Trail at Hwy 18





Bike trail at Hwy 18, looking East



Access lane heading Southeast





Property from North along Hwy 18



Mature White Oaks













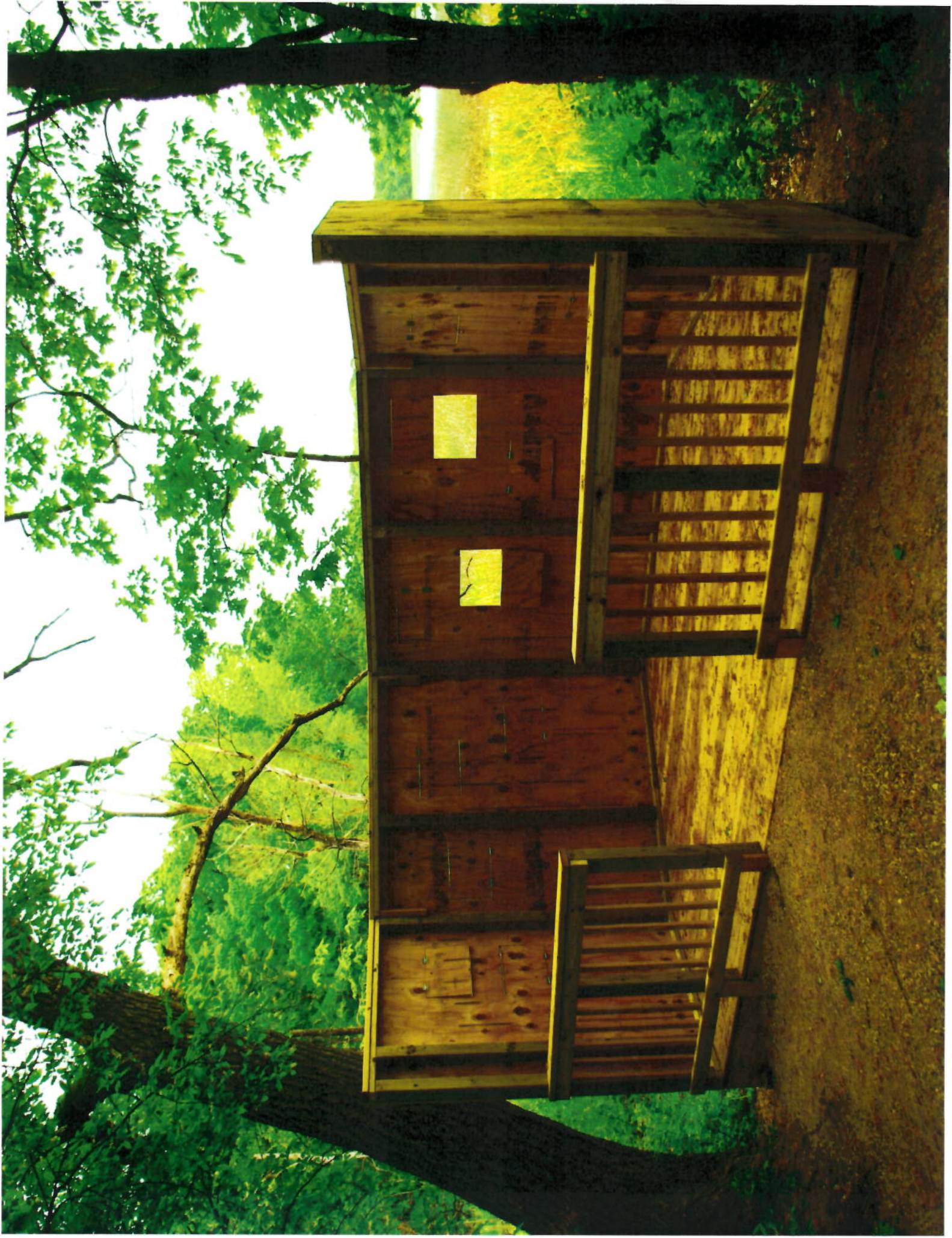














## Jefferson County Snowmobile Trail Maintenance Payout - 2013-2014

Grant Amount	\$ 45,675.00
Less Administrative Charges	\$ (1,137.26)
<b>Total to be Paid to JCSA</b>	<b>\$44,537.75</b>
Total for Grooming	\$ 16,388.50
Total for Labor and Equipment	\$ 44,872.52
Miscellaneous Receipts (signs, etc.)	\$ -
<b>TOTAL</b>	<b>\$61,261.02</b>

CLUB	Grooming Fees	Labor & Maintenance	Misc. Invoices	TOTAL
JCSA	\$ 6,190.00			\$ 6,190.00
Hubbleton Riders	\$ 2,672.50	\$ 7,973.50		\$ 10,646.00
Silver Creek Riders	\$ 845.00	\$ 995.00		\$ 1,840.00
WCSA	\$ 1,495.00			\$ 1,495.00
Palmyra Ridge Riders	\$ 2,000.00	\$ 1,358.00		\$ 3,358.00
Jefferson Snowstormers	\$ 3,186.00	\$ 7,373.11		\$ 10,559.11
Twin River Riders		\$ 4,211.80		\$ 4,211.80
Whitewater Sno-Seekers		\$ 571.00		\$ 571.00
Bark River Riders		\$ 2,247.38		\$ 2,247.38
Watertown		\$ 2,425.93		\$ 2,425.93
Sullivan Sno-Drifters		\$ 1,131.30		\$ 1,131.30
Jefferson Snow Hawks		\$ 3,128.00		\$ 3,128.00
ICE		\$ 1,601.25		\$ 1,601.25
Helenville Hill Hoppers		\$ 2,835.25		\$ 2,835.25
Drift Skippers		\$ 1,516.00	\$ 619.63	\$ 2,135.63
Rome Sno-Barons		\$ 2,917.75		\$ 2,917.75
J.C. Riders		\$ 4,587.25		\$ 4,587.25
<b>TOTAL</b>				<b>\$ 61,880.65</b>

LABOR & EQUIPMENT						
	Labor	Corrected Amount	Equipment	Corrected Amount	Difference	Total
Twin River Riders	\$ 1,316.25	\$ 1,316.25	\$ 2,899.73	\$ 2,895.55	\$ (4.18)	\$ 4,211.80
Whitewater Sno-Seekers	\$ 221.00	\$ 221.00	\$ 350.00	\$ 350.00	\$ -	\$ 571.00
Bark River Riders	\$ 474.50	\$ 474.50	\$ 1,758.80	\$ 1,772.88	\$ 14.28	\$ 2,247.38
Jefferson Snowstormers	\$ 2,951.00	\$ 2,951.00	\$ 4,375.78	\$ 4,422.11	\$ 46.33	\$ 7,373.11
Watertown	\$ 970.13	\$ 970.13	\$ 1,455.80	\$ 1,455.80	\$ -	\$ 2,425.93
Sullivan Sno-Drifters	\$ 318.50	\$ 318.50	\$ 818.88	\$ 812.80	\$ (6.08)	\$ 1,131.30
Jefferson Snow Hawks	\$ 1,157.00	\$ 1,157.00	\$ 2,035.00	\$ 1,971.00	\$ (64.00)	\$ 3,128.00
ICE	\$ 477.75	\$ 458.25	\$ 1,143.00	\$ 1,143.00	\$ (19.50)	\$ 1,601.25
Helenville Hill Hoppers	\$ 770.25	\$ 770.25	\$ 2,073.00	\$ 2,065.00	\$ (8.00)	\$ 2,835.25
Drift Skippers	\$ 494.00	\$ 494.00	\$ 1,022.00	\$ 1,022.00	\$ -	\$ 1,516.00
Silver Creek Riders	\$ 234.00	\$ 234.00	\$ 761.00	\$ 761.00	\$ -	\$ 995.00
Palmyra Ridge Riders	\$ 572.00	\$ 572.00	\$ 786.00	\$ 786.00	\$ -	\$ 1,358.00
Rome Sno-Barons	\$ 789.75	\$ 789.75	\$ 2,128.00	\$ 2,128.00	\$ -	\$ 2,917.75
Hubbleton Riders	\$ 3,204.50	\$ 3,204.50	\$ 4,769.00	\$ 4,769.00	\$ -	\$ 7,973.50
J.C. Riders	\$ 1,738.75	\$ 1,738.75	\$ 2,848.50	\$ 2,848.50	\$ -	\$ 4,587.25
<b>TOTAL</b>	<b>\$ 15,689.38</b>	<b>\$ 15,669.88</b>	<b>\$ 29,224.29</b>	<b>\$ 29,202.64</b>	<b>\$ (41.15)</b>	<b>\$ 44,872.52</b>

GROOMING				MISC	
	Original Amount	Corrected Amount	Difference	(Drift Skippers)	
Hubbleton Riders	\$ 2,672.50	\$ 2,672.50	\$ -	Signs	\$ 564.70
JCSA	\$ 6,565.00	\$ 6,190.00	\$ (375.00)	Menard's Invoice	\$ 39.04
Jefferson Snow Stormers	\$ 3,186.56	\$ 3,186.00	\$ 0.44	Menard's Invoice	\$ 15.89
Palmyra Ridge Riders	\$ 2,000.00	\$ 2,000.00	\$ -	<b>TOTAL</b>	<b>\$ 619.63</b>
Silver Creek Riders	\$ 845.00	\$ 845.00	\$ -	<b>Calculation Errors in Grey</b>	
WCSA	\$ 1,495.00	\$ 1,495.00	\$ -		
<b>TOTAL</b>	<b>\$ 16,763.06</b>	<b>\$ 16,388.50</b>	<b>\$ (374.56)</b>		



Item 20

Jefferson County  
Parks Totals

Date Ran 6/23/2014  
Period 5  
Year 2014

Business Unit	Description	Current Period Actual	Current Period Budget	YTD Actual	YTD Budget	Printed Variance	Total Budget	Annual Remaining	Percentage Of Budget
1801 Parks	Revenue	(2,227.34)	(5,331.67)	(44,345.69)	(96,656.33)	(17,687.36)	(63,980.00)	(19,634.31)	69.31%
	Expenditures	63,653.84	81,332.11	304,931.43	406,660.53	(101,729.04)	975,985.26	671,053.77	31.24%
	Other Finances								#DIV/0!
Total		61,426.50	76,060.44	260,585.80	300,000.10	(219,416.39)	912,005.26	651,419.46	28.57%
1806 Carol Liddle	Revenue	(6.60)	(12.50)	(31.43)	(62.50)	31.07	(150.00)	(118.57)	10.95%
	Expenditures	-	6,787.13	-	33,935.65	(33,935.65)	81,445.55	81,445.55	0.00%
	Other Finances	(6.60)	12.50	-	62.50	(62.50)	150.00	150.00	0.00%
Total		(13.20)	6,774.63	(31.43)	33,935.65	(33,967.08)	81,445.55	81,476.98	-0.04%
1809 Carlin Field	Revenue	(300.00)	(4.17)	(322.99)	(20.83)	(302.16)	(50.00)	271.99	645.98%
	Expenditures	-	842.42	-	4,212.08	(4,212.08)	10,109.00	10,109.00	0.00%
	Other Finances	(300.00)	838.25	(322.99)	4,191.25	(4,514.24)	10,089.00	10,381.99	-3.21%
Total		(600.00)	834.08	(625.98)	4,170.42	(4,834.66)	10,039.00	10,363.01	-3.21%
1811 North Park	Revenue	-	-	-	-	-	-	-	#DIV/0!
	Expenditures	-	-	-	-	-	-	-	#DIV/0!
	Other Finances	-	-	-	-	-	-	-	#DIV/0!
Total		-	-	-	-	-	-	-	#DIV/0!
1812 Carnes Park	Revenue	-	(2,354.67)	(13,218.00)	(11,773.33)	(1,454.67)	(28,256.00)	(15,078.00)	46.81%
	Expenditures	120.00	13,902.50	7,861.19	69,012.50	(61,151.31)	165,530.00	157,668.81	4.75%
	Other Finances	-	4,937.33	-	24,716.67	(24,716.67)	59,320.00	59,320.00	0.00%
Total		120.00	16,591.17	(5,366.81)	81,955.83	(87,322.64)	196,694.00	202,000.81	-2.73%
1813 Park Buildings	Revenue	-	-	-	-	-	-	-	#DIV/0!
	Expenditures	1,075.70	1,329.25	7,793.58	6,646.25	1,147.33	15,951.00	8,157.02	48.86%
	Other Finances	-	-	-	-	-	-	-	#DIV/0!
Total		1,075.70	1,329.25	7,793.58	6,646.25	1,147.33	15,951.00	8,157.02	48.86%
1814 Garman Nature	Revenue	-	-	-	-	-	-	-	#DIV/0!
	Expenditures	11,864.48	1,093.33	11,864.48	5,416.67	6,447.81	13,000.00	1,135.52	91.27%
	Other Finances	-	41.67	-	208.33	(208.33)	500.00	500.00	0.00%
Total		11,864.48	1,135.00	11,864.48	5,625.00	6,239.48	13,500.00	1,635.52	87.89%
1816 Ghiesl Heritage	Revenue	-	-	-	-	-	-	-	#DIV/0!
	Expenditures	-	1,504.42	3,572.00	7,322.08	(4,000.08)	18,051.00	14,531.00	19.51%
	Other Finances	-	541.67	-	2,708.33	(2,708.33)	6,500.00	6,500.00	0.00%
Total		-	2,046.08	3,572.00	10,230.42	(6,708.42)	24,551.00	21,031.00	14.34%
1821 Shawmobile Trails	Revenue	-	(3,606.25)	(22,837.50)	(19,031.25)	(3,806.25)	(45,675.00)	(22,837.50)	50.00%
	Expenditures	-	3,606.25	-	18,031.25	(19,031.25)	45,675.00	45,675.00	0.00%
	Other Finances	-	-	-	-	-	-	-	#DIV/0!
Total		-	-	(22,837.50)	-	(22,837.50)	-	22,837.50	#DIV/0!
1824 Bike Trail	Revenue	(12.00)	(58.33)	(1,427.49)	(291.67)	(1,135.82)	(700.00)	727.49	203.93%
	Expenditures	-	58.33	-	291.67	(291.67)	700.00	700.00	0.00%
	Other Finances	-	82.67	-	415.33	(415.33)	902.00	902.00	0.00%
Total		(12.00)	82.67	(1,427.49)	413.33	(1,040.82)	902.00	2,419.49	-183.90%
1826 Dog Park	Revenue	(4,056.01)	(3,266.67)	(23,437.29)	(16,333.33)	(7,103.96)	(99,200.00)	(15,762.71)	59.79%
	Expenditures	1,446.36	4,603.83	4,538.66	23,019.17	(18,480.51)	45,246.00	50,707.34	8.22%
	Other Finances	-	(13.58)	-	(67.92)	67.92	(163.00)	(163.00)	0.00%
Total		(2,609.65)	1,323.58	(18,898.63)	4,611.42	(25,516.55)	15,883.00	34,781.63	-118.99%
1840 Groundskeeping	Revenue	(5,423.68)	(4,616.17)	(11,141.38)	(23,080.83)	11,939.45	(65,394.00)	(44,252.62)	20.11%
	Expenditures	5,423.68	6,666.17	11,141.41	34,330.83	(23,189.42)	82,394.00	71,252.59	13.52%
	Other Finances	-	-	-	-	-	-	-	#DIV/0!
Total		-	2,250.00	0.03	11,250.00	(11,249.97)	27,000.00	26,999.97	0.00%
Total All Business Units	Revenue	(12,025.63)	(19,450.42)	(116,771.77)	(97,252.08)	(19,519.69)	(232,405.00)	(116,638.23)	50.03%
	Expenditures	83,584.06	122,015.73	351,653.21	610,076.67	(236,425.46)	1,464,188.81	1,112,535.60	24.02%
	Other Finances	-	5,608.25	-	28,041.25	(28,041.25)	67,299.00	67,299.00	0.00%
Grand Total Parks		71,558.43	108,173.57	234,883.44	546,867.84	(305,984.40)	1,298,092.81	1,063,201.37	18.09%